
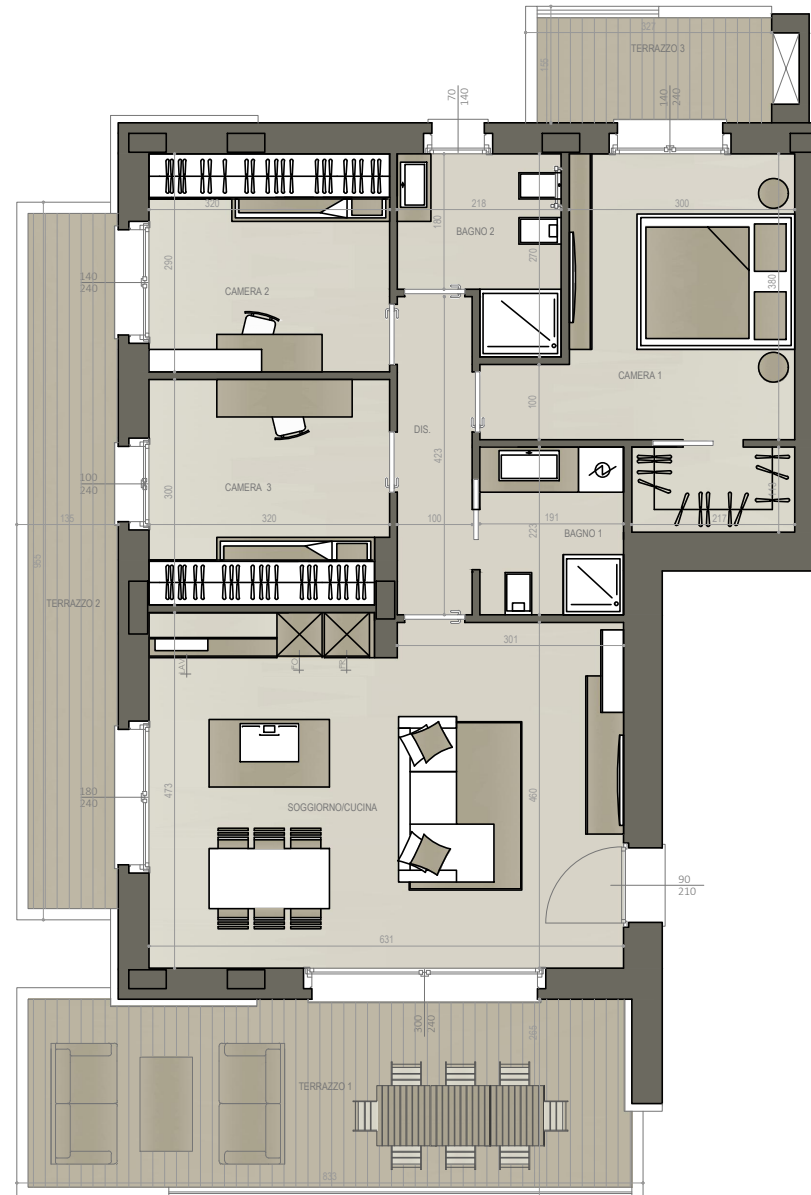


# B3 | Piano Primo

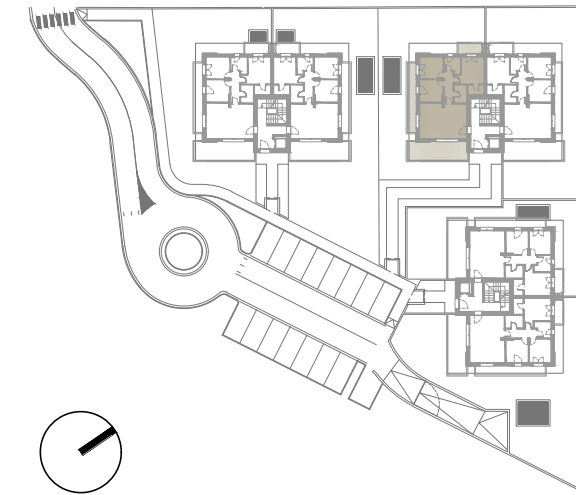
 121,36 mq

 2

 2



LOCALE	S.U. mq		
Soggiorno/cucina	29,28 mq	Camera 3	9,42 mq
Disimpegno	4,23 mq	Terrazzo 1	22,05 mq
Bagno 1	4,26 mq	Terrazzo 2	12,90 mq
Bagno 2	4,90 mq	Terrazzo 3	5,07 mq
Camera 1	15,26 mq	Garage	27,08 mq
Camera 2	9,28 mq		



## FABRICA

REAL ESTATE

RESIDENZA LAURA 4 - GORLE (BG)  
APPARTAMENTO B3 | PIANO PRIMO | SCALA 1:50

