

B3 | Piano Sottotetto e Interrato |



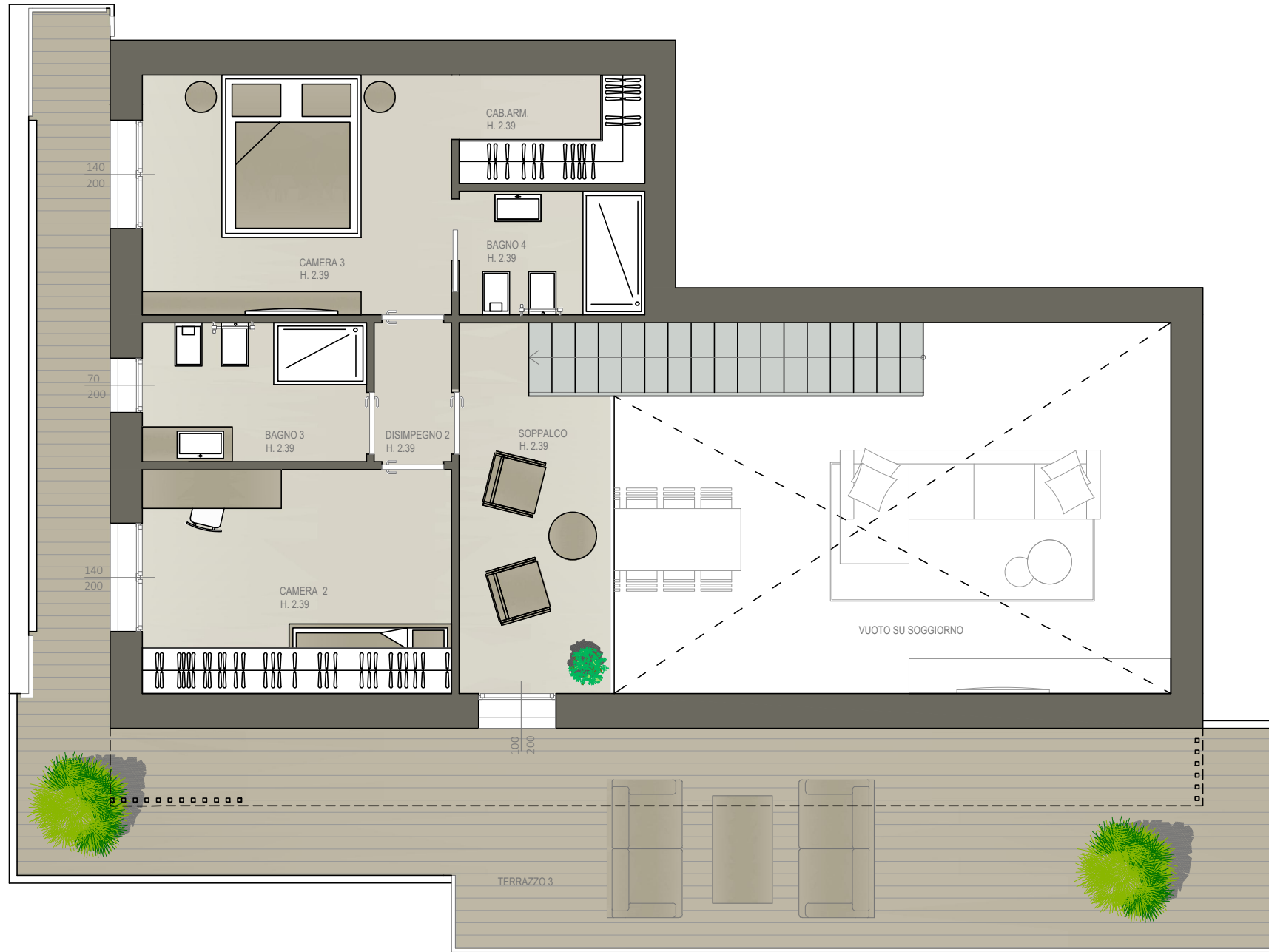
178,83 mq



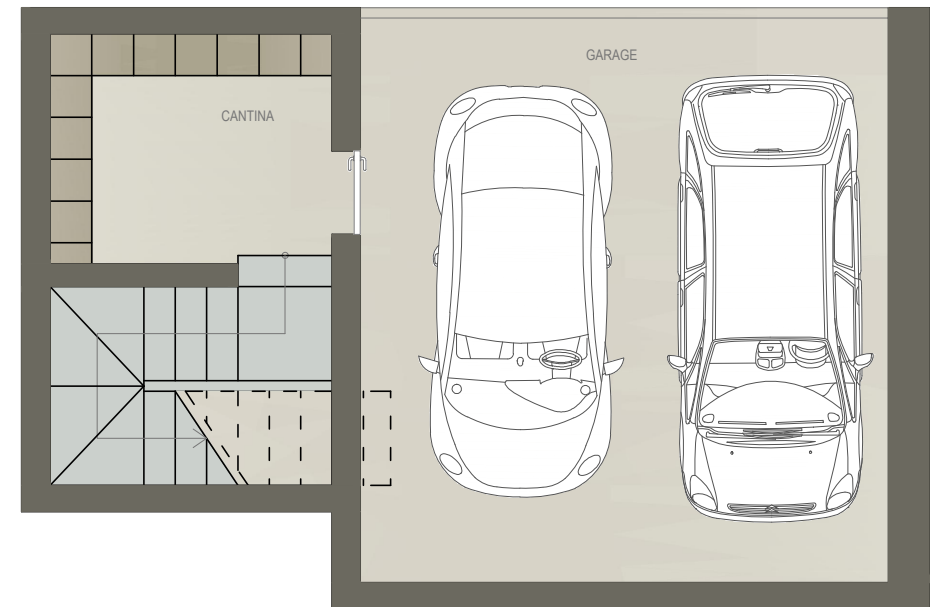
2



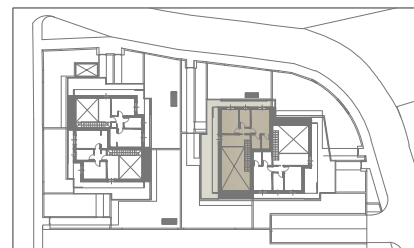
2



|Piano Sottotetto |



|Piano Interrato |



B3 |Piano Primo|



178,83 mq



2



2



|Piano Primo |

LOCALE	S.U. mq	LOCALE	S.U. mq	LOCALE	S.U. mq
Soggiorno	44,16 mq	Camera 2	11,60 mq	Terrazza 3	49,90 mq
Cucina	11,76 mq	Camera 3	15,90 mq	Pavimentazione	2,28 mq
Disimpegno 1	1,80 mq	Disimpegno 2	1,80 mq	Giardino	18,42 mq
Bagno 1	5,22 mq	Soppalco	8,56 mq	Cantina	5,94 mq
Bagno 2	3,84 mq	Terrazza 1	40,46 mq	Garage	27,78 mq
Camera 1	15,50 mq	Terrazza 2	7,71 mq		

